

Model NO. : SSL-08R

Arges series Solar Street Lights 6000Lumens

Intelligence/Efficiency/Energy Saving

Application: High way/Park/Street/Roadway/Parking

Lot/Public square/ plaza/Campus/Airfield/Farm &

Ranch/Remote Area/Military Base/Government

project for special use

Categories: [Solar Street Light](#)

www.usaemergencysolarenergy.com PH+1-303-634-2208

Fax: +1-303-634-2208 Email: sales@usaemergencysolarenergy.com

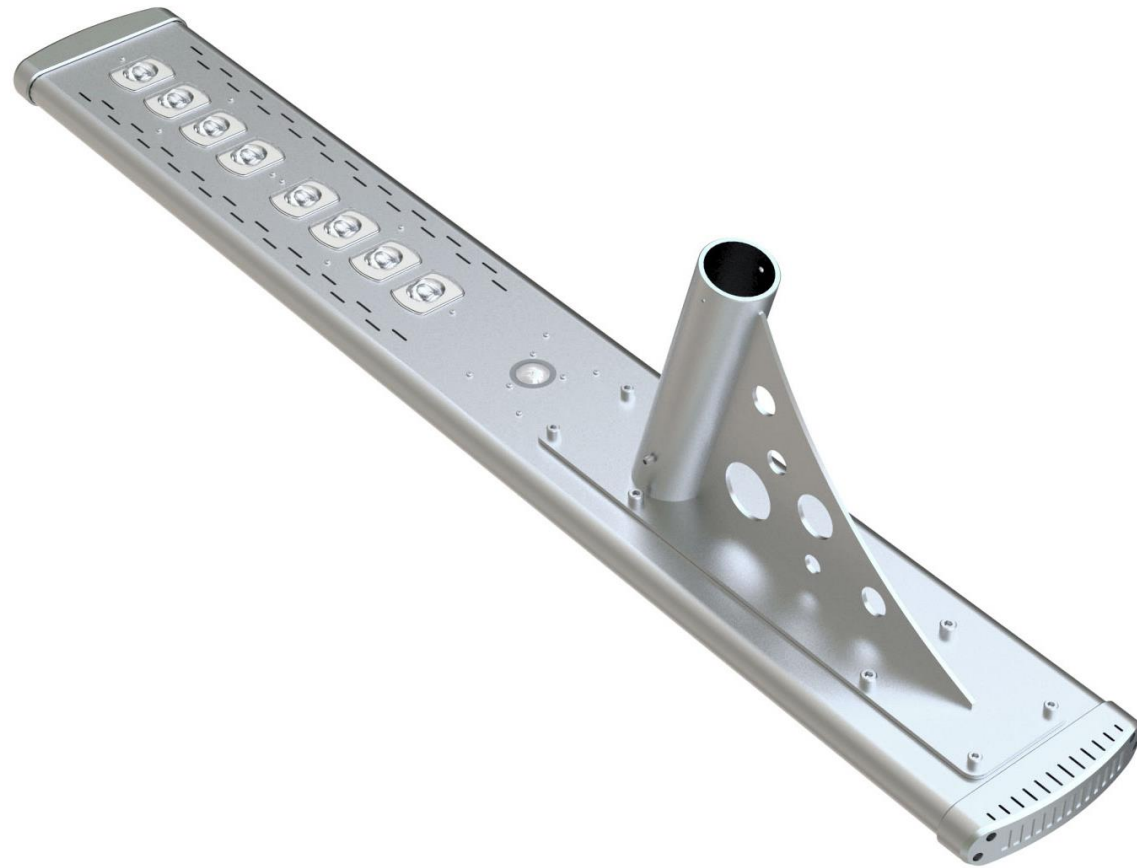


www.usaemergencysolarenergy.com
PH+1-303-634-2208
Fax: +1-303-634-2208 Email:
sales@usaemergencysolarenergy.com

Features: 1.Smart Remote Control Function to satisfy different Customer use. 3 Main Lighting mode as below 1). Constant Brightness all the time (100%/60%/30%/10%) 2). Dim lighting + Motion sensor (30 seconds 60% High brightness) 3). Timer lighting Mode (6 Option) 2.Adaptive Lighting System to achieve all night lighting when Weather change. Constant current output! 3.VFT(Variable Frequency Technology) to Control and adjust the LED driver frequency to reach the max output of LED and Battery 4TCS (Temperature Control System) to Protect the battery charging and discharging in high temperate 5.10 Hour full charge the battery by standard Sunlight, Once the battery are full charged, it can support 3 night lighting. 6. SSC LED chip, 160 lumen/W		price per unit	50 pcs Price			
		us\$750.05 BUY NOW	us\$705.99 BUY NOW			
LED	6000Lumens 80 LEDs 6500K	Lighting mode				
Li-ion battery	230.88 WH 22.2V	3 Main Lighting mode as below 1. Constant Brightness all the time (100%/60%/30%/10%) 2. Dim lighting + Motion sensor (30 seconds 60% High brightness) 3. Timer lighting Mode (6 Option) Application: Courtyard/Garden/ Park/Street/Roadway/pathway/Parking Lot/Private road/Sidewalk/Public square/ plaza/Campus/Airfield/Farm & Ranch/Perimeter Security/ Wildlife area/Remote Area/Military Base				
Solar Panel	33 W,27V					
Install height	5~7 meters					
Waterproof	IP 65					
Solar charging time	10 hours by bright sunlight					
Lighting time	Over 3 nights					
Material	Aluminum alloy + tempered glass	Packing details: Carton size for lamp: 163*13.5*29.5 CM Retail packaging:165*29*31.5cm QTY/CTNS: 2PCS G.W/CTNS:26 KG Carton size for bracket: CM Retail packaging: cm QTY/CTNS: PCS G.W/CTNS: KG Marks: Lamp and bracket Packed in different carton. www.usaemergencysolarenergy.com PH+1-303-634-2208 Fax: +1-303-634-2208 Email: sales@usaemergencysolarenergy.com				
Size	1553*420.5*224.5 mm					
Warranty	3 years					



www.usaemergencysolarenergy.com
PH+1-303-634-2208
Fax: +1-303-634-2208 Email:
sales@usaemergencysolarenergy.com



www.usaemergencysolarenergy.com
PH+1-303-634-2208 Fax: +1-303-634-2208 Email:
sales@usaemergencysolarenergy.com

www.usaemergencysolarenergy.com
PH+1-303-634-2208
Fax: +1-303-634-2208 Email:
sales@usaemergencysolarenergy.com



www.usaemergencysolarenergy.com
PH+1-303-634-2208
Fax: +1-303-634-2208 Email:
sales@usaemergencysolarenergy.com



•PRODUCTS DETAIL

•Main Features:

- 1.Design: Big solar panel, Battery, LED panel are all in One Integrated Design
- 2.Solar panel: High efficiency Glass Lamination panel
- 3.LED: South Korea imported LED Chip SSC,140 lumen/W
- 4.Battery : A graded Li-ion battery No.18650
- 5.PIR :Motion sensor distance over 7M
- 6.Remote controller : Adjust brightness ,lighting time and lighting mode
- 7.Technology: three core Intelligence technology to improve brightness 30% and save power 50%

www.usaemergencysolarenergy.com PH+1-303-634-2208

Fax: +1-303-634-2208 Email: sales@usaemergencysolarenergy.com

Working process instructions

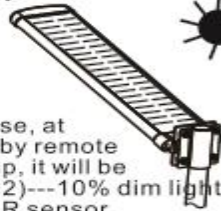
Use the supplied key pin to click the "on/off" socket to unlock the battery

Please fasten the light to the pole by the bolt



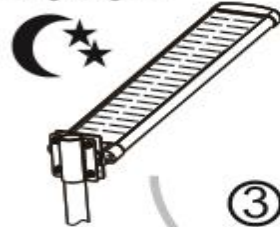
Step1: Light switch off for sun charging in daytime.

①



Step2: When the first time use, at night, press the button "on" by remote controller to turn on the lamp, it will be the default lighting mode (M2) --- 10% dim light when no people around + PIR sensor 60% brightness for 30s, then turn to dim light again.

②



Step4: After set M1 or M2 neutral lighting mode, if you need to set other lighting mode please see the remote controller manual for instruction.
Notice: If set other lighting mode (brightness and timer mode), the lamp will have memory function. In the next day it will work with the same lighting mode as we set up, and after the time is over, then it will turn to default lighting mode M2.

③



④

Step3: Use remote controller to choose M1 or M2 two neutral lighting mode
M1 (15%+PIR): 15% dim light when no people around + PIR sensor 60% brightness for 30s, then turn to dim light again.
M2 (10%+PIR): 10% dim light when no people around + PIR sensor 60% brightness for 30s, then turn to dim light again.
Notice: After choose M1 or M2, if don't press other button, it will keep the same mode the second day.